

Specifications

System Function	Category	Random access, fully automatic chemistry analyzer
	Throughput	240 tests/hour (without ISE), 315 tests/hour (with ISE)
	Methodology	End point, Fixed Time, Kinetic
	Reagent	Open system
	Reagent Position	40
	Sample Position	40
	Minimum Reaction Volume	150uL
	Carryover	<0.005%
	Water Consumption	Low to 5L/Hour
	Maximum Reaction Time	19.1 minutes (Single Reagent), 15.7 minutes (Dual reagent)
Sample Reagent Probe & Mixer	Maximum Reaction Volume	500 uL
	Principle	Colorimetry, Turbidimetry
	Testing Mode	Regular mode(single&dual reagents), fast mode(single reagent)
	Sample Mode	Random access, STAT sample priority
	Sample Volume	2~50uL, step by 0.1 uL
	Sample Disk	40 positions
	Sample/reagent Probe	One probe for sample and reagent with liquid level detection, vertical and horizontal collision protection and reagent volume real time monitoring function
	Sample Tube	Regular sample tube (13 x 100mm, 13x75 mm, 12x100 mm, 12x75 mm), Vacuum tube, eppendorf tube, plastic tube, etc.
	Reagent Volume	R1:150-450 uL, R2:10-300uL, step by 1uL
	Reagent Disk	40 reagent positions, 24 hours water cooling, 4-12°C
Reaction System	Reagent Bottles	Compatible with Olympus and Hitachi reagent bottles
	Mixer	High polished nano material mixer
	Reaction Cuvettes	81 cuvettes, semi-permanent rigid UV special plastic cuvettes
	Wash Station	6-step auto wash station
	Reaction Temperature	37±0.1°C
	Heater	Metal thermostat for reaction disk
	Lamp	Halogen Tungsten lamp, 12V20W, about 2000hours, water cooling system
	Filter	FMSS(Full-sealed Matrix Spectrometric System)
	Wavelength	8 wavelengths: 340,405,450,510,546,578,630,670nm
	Resolution	0.0001Abs
Optical System	Linearity Range	0-3.5Abs
	Accuracy	0.5A: < ± 0.02AbS, 1 .0A: < ± 0.04Abs
	Stray Light	>4.5
	Stability	<0.01Abs/hour
	CV	<1.5%
	Half Band Accuracy	≤ ±2nm
	Detector	Photodiode detector array
	Calibration Mode	One point linear, two point linear, multi-point linear, Logit-4P, Logit-5P, spline, exponential, polynomial
	Calibration Curve	Calibration curve auto check, auto curve fitting
	QC Rule	Westgard multi-rule. Cumulative sum check, Twin Plot
Cal&QC	QC Curve	Westgard multi-rule, Cumulative sum check, Twin Plot
	QC Warning	Out of control auto warning, data automatic record and analysis
	Operating System	Windows 7/10
	Data Storage	Decided by computer hard disc capacity
	LIS Interface	Bi-LIS interface
	Print Mode	Multi default formats, user-defined formats
	System Monitor	Real time monitoring for sample disk, reagent disk, reaction disk. Real time monitoring for QC status. Real time monitoring for reaction cuvettes status, lamp status and temperature. Real time monitoring for reagent volume, reaction curve, calibration curve and QC curve. Linearity range limitation, substrate exhaustion judgement and prozone detecting. Abnormal status warning.
	Other Function	User authority setting, test panel function, calculated/manual parameters programing, carryover setting, sample and reagent blank auto calculation, automatic failure recovery, automatic print, data statistic, auto/manual dilution test, auto retest.
	PC Configuration	CPU 2.5GHz, memory 4GB, hard disc 500G 19 inch widescreen monitor
	Software	PC Interface
Dimension		855(L)x 550(D) x 580(H)
Power Supply		AC 100-240V, 50/60Hz ± 1 Hz, ≤350VA
Net Weight		75Kg
Optional Parts		Barcode reader, Water purification module, PC with touch screen, HP laser printer
Others		

Alpha Chem²⁴⁰ plus

Auto Chemistry Analyzer

Precise, Fast and Stable

Alpha Chem 240 Plus - with onboard Washing
Alpha Chem 240 - without onboard Washing



Alpha Technologies

Plot No. 65, Rukmani Nagar, 3rd Street,
Maduravoyal, Chennai - 600 095
State/Province : Tamilnadu
Country : India. Ph : 044-2378 1214
Mob: +91 9444087961
Mail: info@alphatechnologiesindia.com
website: www.alphatechnologiesindia.com



ABOUT ALPHA TECHNOLOGIES

We offers a broad portfolio of performance driven In Vitro Diagnostics products and instrumentation for use in hospitals, diagnostic laboratories and research centers worldwide.

Our brand, along with our domestic and international manufacturing partners, provides a high quality, cost-effective alternative for diagnostics instrumentation, assays and reagents for better delivery, more personalized care to patients around the globe.

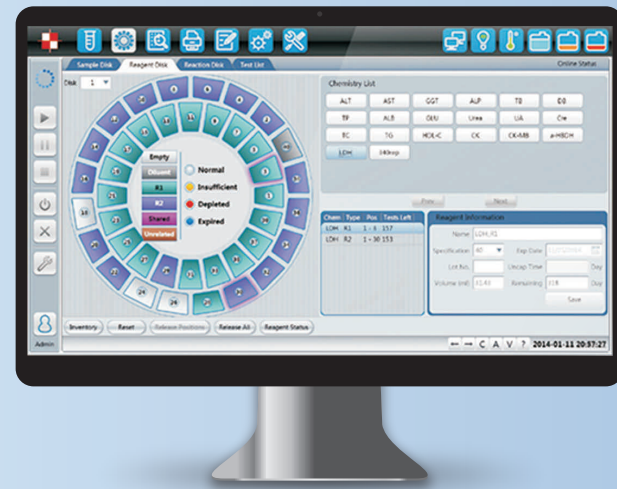
ISO 9001: 2015
ISO 13485:2016
Certified Company

User Friendly Software

- Easy operate with iconic interface
- Multi-language available
- Easy reagent parameters setting
- Support batch request, panel/calculation test
- Print out report template editable
- Auto troubleshoot failure and recovery
- Powerful statistic system
- Manual dilution, auto dilution and post dilution
- Easy rerun and restore test

Calibration & QC

- Multiple calibration mode
- Advanced algorithm to obtain best calibration curve
- Multi QC rules: Westgard, Cumulative sum check, Twin plot

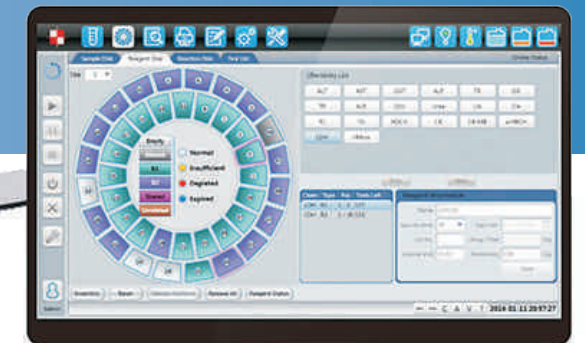


Real Time Monitoring

- Reaction curve, calibration test and QC test curve
- Sample, reagent and reaction cuvette status
- Lamp intensity, water tank and waste tank status
- Reaction disk and reagent disk temperature

Alpha Chem 240 *plus*

Auto Chemistry Analyzer



Reaction System

- 81 high light transmittance reaction cuvettes
- Metal thermostat ensures stable temperature: 37°C
- Auto water blank test ensures precise results
- Optional quartz glass cuvette



Sample & Reagent Disk

- 24 hours reagent refrigerator: 4–12°C
- Noise free water cooling design
- 40 positions for reagent
- 40 positions for sample with STAT priority
- Optional barcode scanner available



Sampling System

- High polished nano material sample/reagent probe
- High accuracy ceramic syringe
- Auto depth adjustment
- Liquid level detection, vertical and horizontal collision protection
- Maintenance free rotor with stable movement

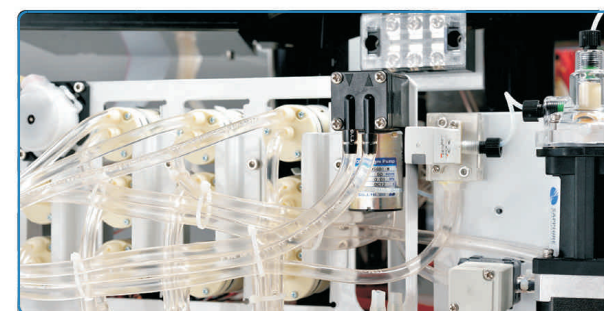


Anti-contamination Design

- 6-step wash station washes cuvettes with wash solution
- High polished nano material mixer
- Automatic probe and mixer washing
- Intelligent anti-contamination program

Fluid System

- Branded components including: IWAKI pump, SMC valve, Ceramic syringe, THOMAS peristaltic pump, Tygon tubing and CPC tubing couplings
- Built-in degasser ensures precise sampling



Optical System

- Halogen tungsten lamp with about 2000H life time
- Full-sealed matrix spectrometric system
- Simultaneously dual wavelength detection to avoid interference
- Silent water cooling design



Optional

- Internal PC with touch screen
- ISE Module: K⁺, Na⁺, Cl⁻
- Barcode Reader